

## FEATURES

### 1. "Zero\*" shot leak

With the new design, Ti-SNBX-II can bring about zero\* percent shot leak. This in return leads to less abrasives consumption expenses as well as creates better and clean working environment

\* Remark: Zero% in our definition means shot leaks of less than 1000g/year

### 2. Efficient mechanism

Ti-SNBX-II is equipped with impeller that has motor directly attached to it as driven unit and because of this mechanism energy losses are

### 3. Easy to install and relocate

Dust collecting unit is attached to shotblasting main unit; therefore, due to its compact size, installation and/or machine relocation can be easily performed.



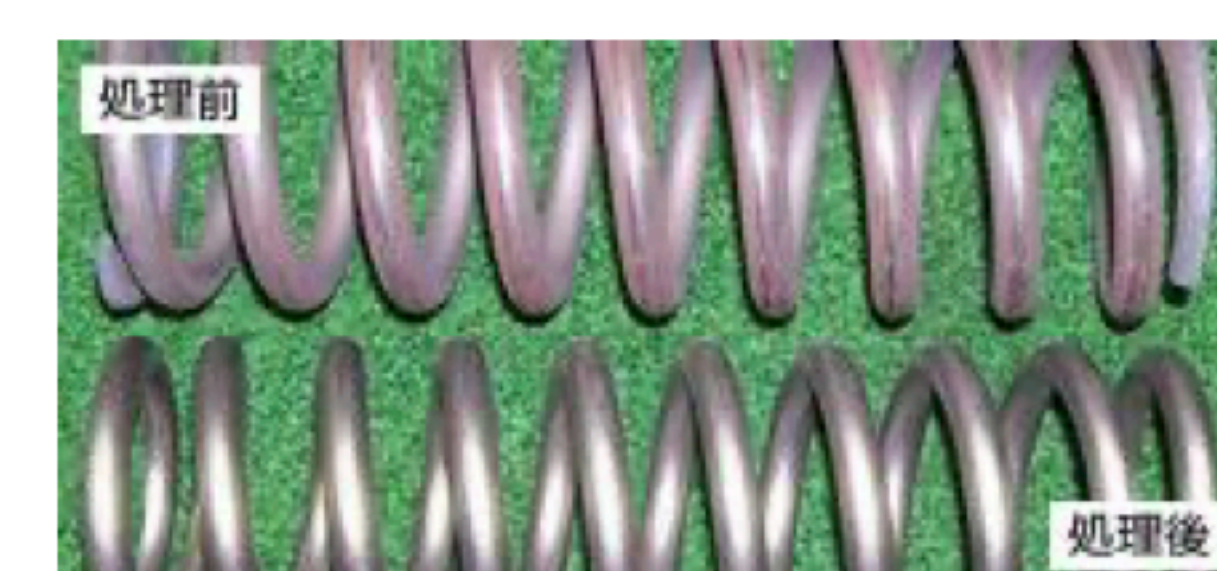
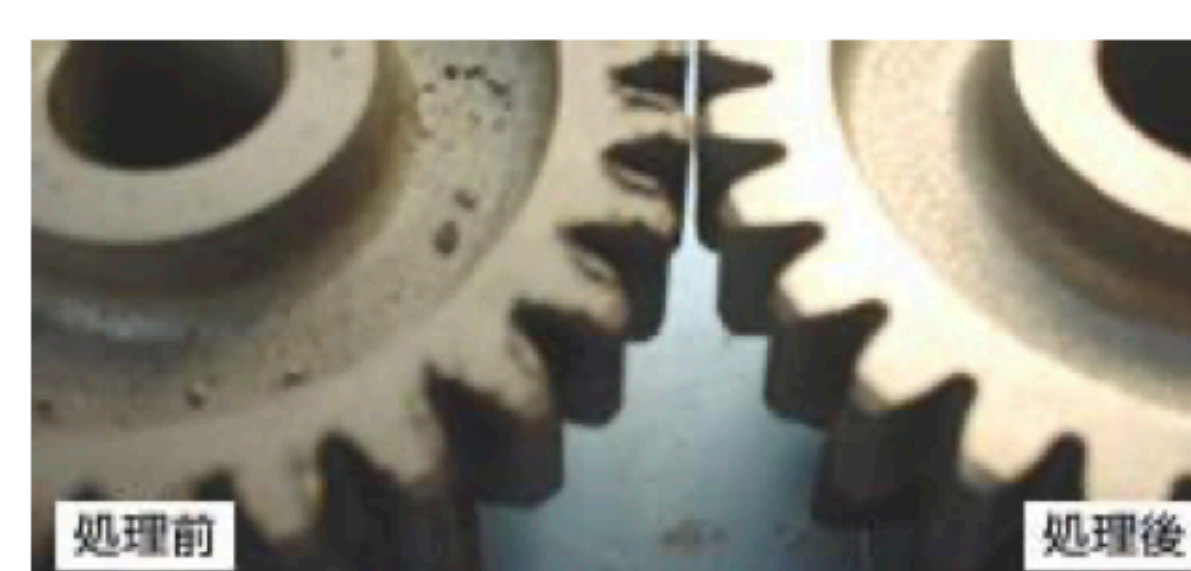
## TI-SNBX-II APRON BLAST

## APPLICATIONS

Blasting Cabinet



Samples of work piece



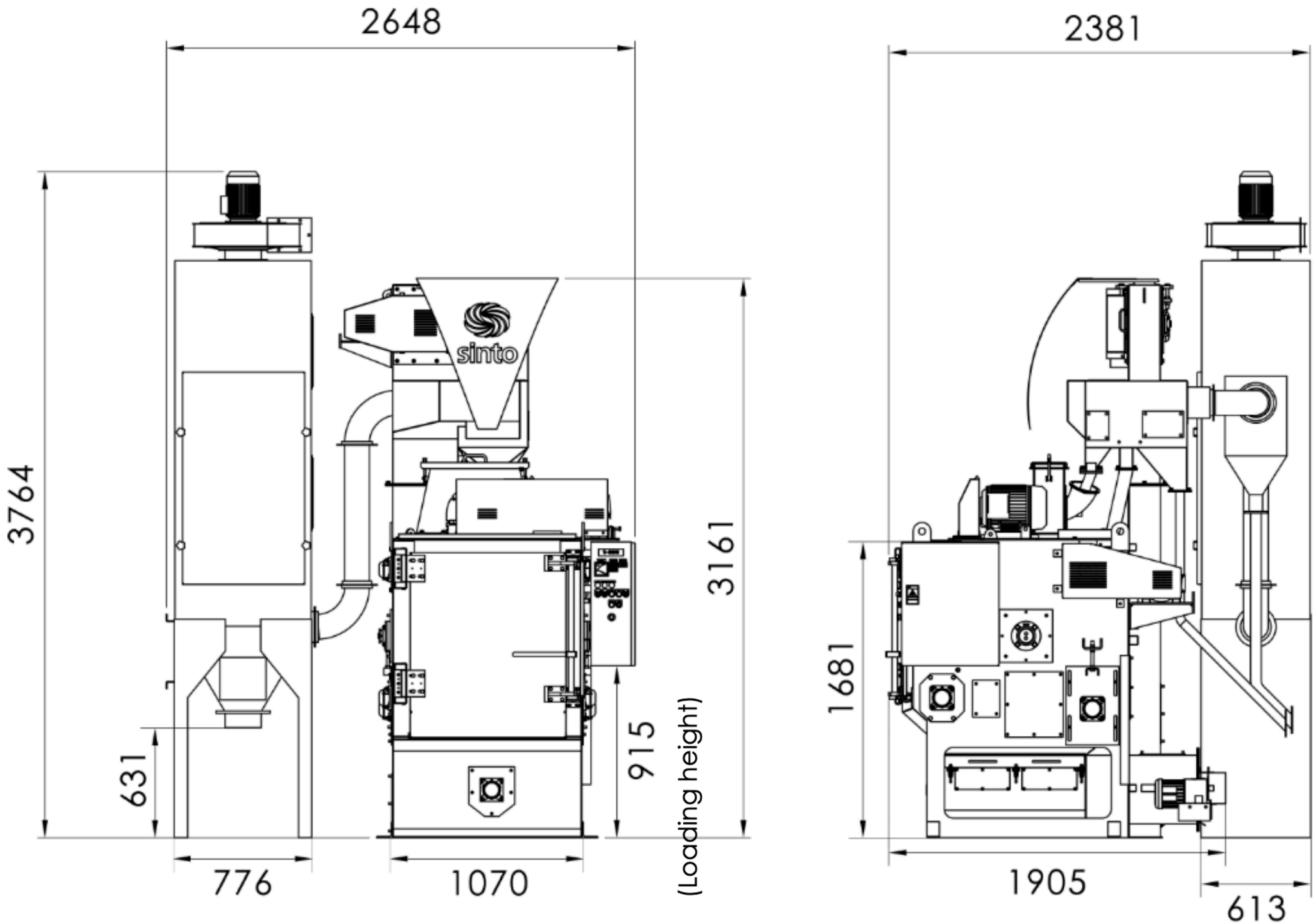
## 3 魅一体

### 3-IN-1 SOLUTION (IN ASSOCIATION WITH SIAMBRATOR)

We are determined to meet our customers' most satisfaction. That is the reason behind our 3-in-1 business solution by offering cutting edge technology and equipment, medias and abrasives, and after-service maintenance.







SPECIFICATION

		Ti-SNBX-II-N (Normal)	Ti-SNBX-II-S (Special)
Condition	Application	Sand-removal	De-scale, Roughening
	Applied abrasives	(S-170 – S-550) Size 0.5-1.7mm	(S-170) Size 0.5 or smaller
Capacity	Blasting capacity (m³/batch)	0.15 (or 150L/batch)	
	Loading weight (Kg/batch)	300 (Max)	
	Weight per workpiece (Kg/piece)	15 (Max)	
	Length of workpiece (mm/piece)	300 (Max)	
	Blasting cabinet	Dia750 x 800mm(L)	
	Impeller	Y-30 (7.5kW x 4P)	
	Rotary Screen	Dia280 x 587(L)mm (0.4kW x 4P)	
Control panel	Type	Re-lay with timer (Omron)	PLC controller (Mitsubishi)
Information	Dust collector (air volume)	20m3/min	
	Type	Normal	Anti-explosion with CaCo3 feeder
	Dust discharge function	Manual – Slide Gate	Automatic (Rotary Valve)
	Filter	Normal	Anti-static
* To improve quality of our product, changes of specification may apply without prior notice			

Y30 IMPELLER

Superior blasting

30% Longer part life

Ease of maintenance

**What is impeller?**

Impeller is heart and soul of shot blasting machine. The impeller itself produces concentrically high-speed of 3000 revolutions per minutes to blast abrasives. Y30 a new version of Sinto impeller is designed for superior blasting in association with better structure of part combination attributable to longer useful life and ease of maintenance service.

**What are the features?**

- Reverse revolution: direction is selectable either forward or backward revolution
- Constant and stable projection
- Less deviation between direct and indirect projection areas

